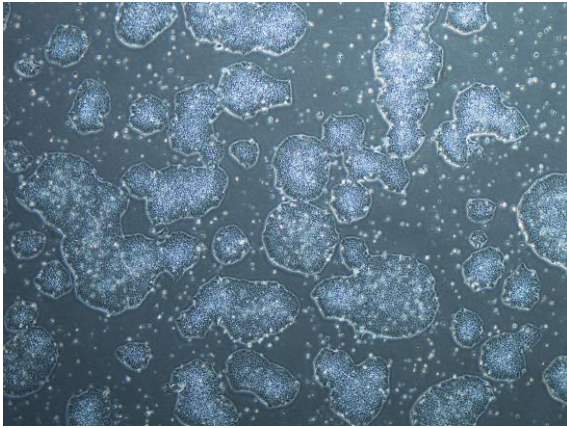
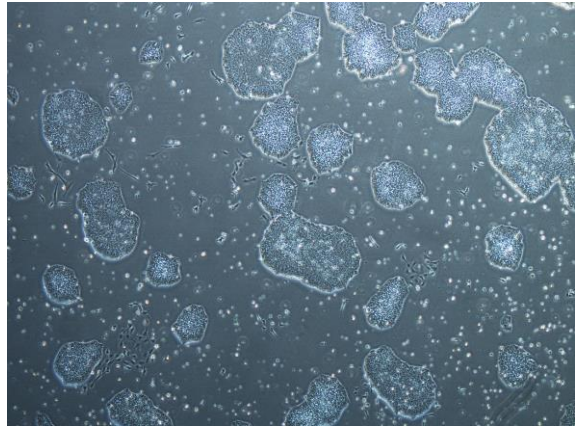


【 CiRA-j-1108 】 Morphology of iPSC colonies

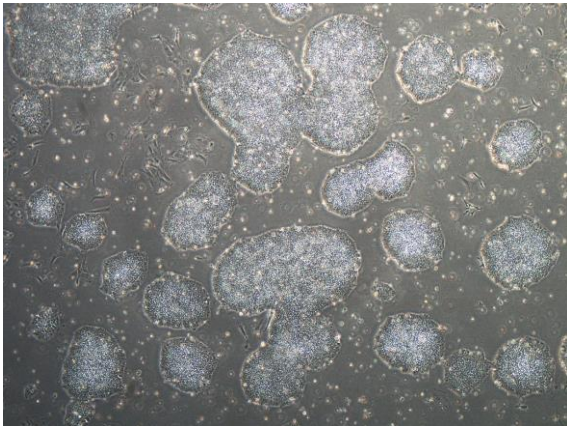
CiRA-j-1108-A: passage-2



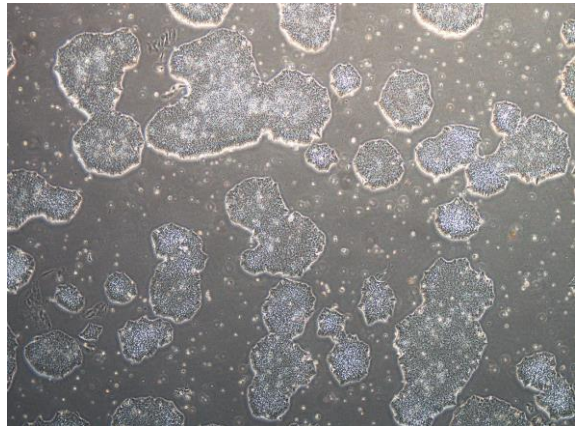
CiRA-j-1108-B: passage-2



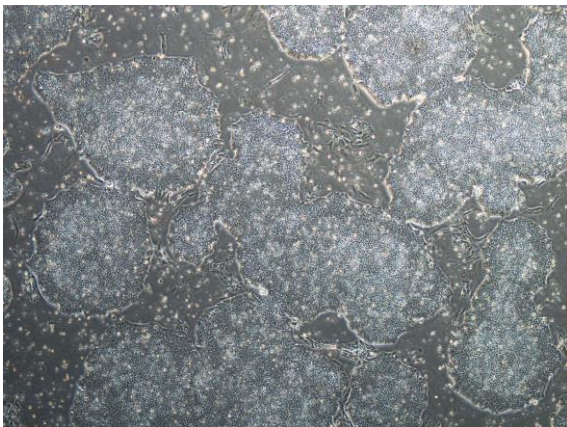
CiRA-j-1108-C: passage-2



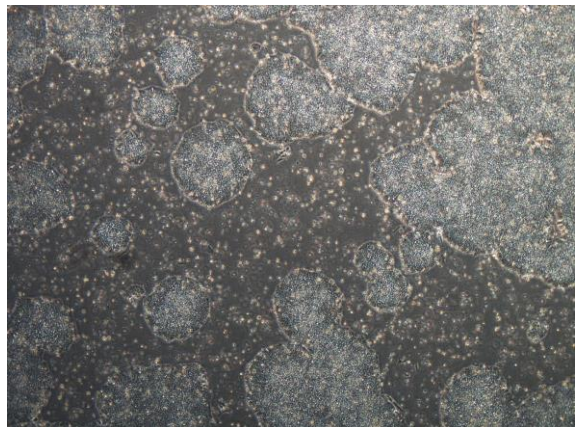
CiRA-j-1108-D: passage-2



CiRA-j-1108-E: passage-2



CiRA-j-1108-F: passage-2



(All images were captured at 4x magnification)